

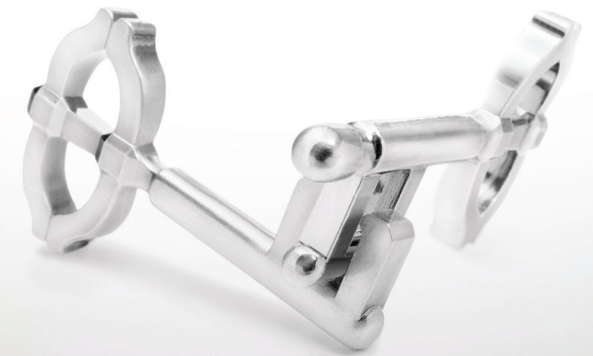
MANCHES

Manches LLP
9400 Garsington Road
Oxford Business Park
Oxford
OX4 2HN
Tel: +44 (0) 1865 722106
Fax: +44(0) 1865 201012

Manches LLP
Reading Bridge House
Reading Bridge
Reading
RG1 8LS
Tel: +44 (0) 118 982 2640
Fax: +44 (0) 118 982 2641

Manches LLP
Aldwych House
81 Aldwych
London
WC2B 4RP
Tel: +44 (0) 20 7404 4433
Fax: +44 (0) 20 7430 1133

www.manches.com



FAMILY WEALTH PROTECTION
Your guide to preserving your family's wealth

www.manches.com

FAMILY WEALTH PROTECTION

During your lifetime much can be done to preserve your family wealth and ease the tax burden on those left behind. We can help you to protect vulnerable beneficiaries in the future.

At Manches, we specialise in providing wealth preservation advice tailored to your particular circumstances, which helps you minimise tax liabilities and maximise tax reliefs. We provide a complete range of estate planning:

- Will writing
- Inheritance tax planning
- Trust creation and management
- Powers of attorney
- Estate administration

WHY MAKE A WILL?

Making a Will gives you the peace of mind that your estate will be dealt with by people you trust and that it will pass to your chosen beneficiaries.

You may already have a Will but it is a good idea to review it at regular intervals, particularly if your circumstances have changed or there are any changes in taxation laws. Without a Will, the law decides who will inherit your property and who will be responsible for dealing with your estate.

Here are some of the benefits of a carefully drawn up Will:

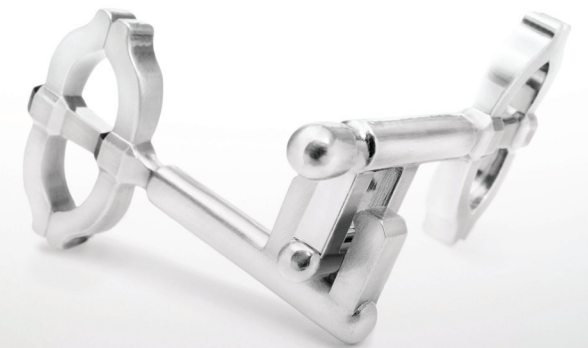
- you can control who benefits from your estate and how
- you can appoint executors of your choice
- you can appoint guardians
- you can ensure that significant savings in inheritance tax are achieved
- you can outline any specific wishes you have.

INHERITANCE TAX PLANNING AND TRUSTS

At Manches we have long experience of advising our clients on how to minimise the effect of inheritance tax and we have particular expertise in the creation and management of trusts, designed to reduce the potential inheritance tax bill on your death. We can steer you through the maze of taxation legislation.

Here are some of the reasons for setting up a trust:

- To make a provision for your family now and in the future
- To assist in effective tax planning, in particular, to reduce the amount of inheritance tax payable
- To protect assets that you do not want your beneficiaries to have free access to
- To make a gift to a loved one with conditions e.g. how trustees should administer the trust, what age the person should be when he or she receives the capital or income and to protect assets for future generations.



ESTATE ADMINISTRATION

Dealing with the estate of a loved one can be a very time-consuming and upsetting burden. Our Private Client team prides itself on giving a professional, sympathetic and highly cost-effective service. By following formal processes we ensure that estates are dealt with as quickly and efficiently as possible.

Here is a brief outline of what an executor is required to do:

- Investigate the value of the estate
- Apply for the Grant of Probate
- Collect in the assets
- Settle income tax, inheritance tax and other taxes
- Sell/transfer property
- Deal with assets abroad
- Distribute assets according to the Will or Intestacy
- Prepare final accounts for HM Revenue and Customs
- Provide a detailed account at the end of the administration estate.

POWERS OF ATTORNEY

Our Private Client team can give you clear, pragmatic advice on the use and creation of new Lasting Powers of Attorney (LPA).

You can create two types of LPA:

- **Property and Affairs LPA:** This allows you to nominate one or more attorneys to make decisions in respect of your financial and property affairs. The LPA will continue if you are no longer able to or lack the capacity to make those decisions.
- **Personal Welfare LPA:** This is not dissimilar to a Living Will in that it gives the attorney authority to make decisions relating to your personal welfare

Manches offer a FREE Will review service - for more information, please contact Anna Burnside or one of our Private Client team.

Contact us for a no obligation chat to see how we can help you



Anna Burnside
Head of Private Client
anna.burnside@manches.com

Penny Wright
Private Client Associate
penny.wright@manches.com

Fiona Wheeler
Private Client Associate
fiona.wheeler@manches.com



Jan Tyley
Private Client Associate
jan.tyley@manches.com

Laura Yuill
Probate & Trusts Manager
laura.yuill@manches.com