

## Our Team

Contact us for a no obligation chat to see how we can help you



Jane Mitchell  
Head of Family  
jane.mitchell@manches.com

Kerry Fretwell  
Family Partner  
kerry.fretwell@manches.com

Anna Burnside  
Head of Private Client  
anna.burnside@manches.com



Tom Gilman  
Private Client Partner  
tom.gilman@manches.com

Nick Owens  
Residential Conveyancing  
nick.owens@manches.com

Amanda Lloyd  
Residential Conveyancing  
amanda.lloyd@manches.com

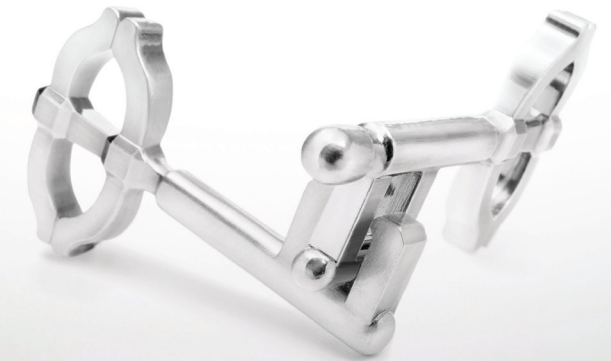
## MANCHES

Manches LLP  
9400 Garsington Road  
Oxford Business Park  
Oxford  
OX4 2HN  
Tel: +44 (0) 1865 722106  
Fax: +44(0) 1865 201012

Manches LLP  
Reading Bridge House  
Reading Bridge  
Reading  
RG1 8LS  
Tel: +44 (0) 118 982 2640  
Fax: +44 (0) 118 982 2641

Manches LLP  
Aldwych House  
81 Aldwych  
London  
WC2B 4RP  
Tel: +44 (0) 20 7404 4433  
Fax: +44 (0) 20 7430 1133

[www.manches.com](http://www.manches.com)



## SERVICES FOR INDIVIDUAL CLIENTS

*“Clients and peers praise the team”*

Chambers & Partners UK

## Services for individual clients

*“This team is able to match its talent to particular issues. It offers such a range of approaches and styles, you can pick out a specific solicitor to meet your needs.”*

Chambers & Partners UK

With one of the strongest private client teams in the region, we have an outstanding reputation for providing high quality legal services to our clients. Our private client team provides clear and pragmatic advice to individuals, families, professional trustees and charities in connection with all aspects of family law and wealth protection.

We know our clients appreciate our committed, well-informed, friendly and collaborative approach. We also know that they appreciate receiving City-quality advice at regional rates. Manches combines the best of both worlds: the expertise and excellence of a City-firm with the personal service of a local one.

Our expertise falls into three broad categories:

- Family wealth protection
- Family law
- Residential conveyancing services

Our success is based on the proven experience and talent of our lawyers, who are recognised as leading specialists in their field.

*“The ‘go-to’ team!”*

Chambers & Partners UK

## Family law

*Ranked as leaders for family law since 2001*

We can provide you with a family law team whose specialists recognise that you need an advisor with sound judgement, formidable negotiating skills and meticulous care to achieve resolution either through the court process or by alternative routes such as collaborative law or mediation.

- Divorce and Civil Partnership Dissolution
- Collaborative Family Law and Mediation
- Disputes involving Children
- Financial Settlement following separation, including the effect of divorce on pensions
- Cohabitation, pre-nuptial and pre-Civil Partnership advice
- Separation Agreements

## Family wealth protection

We specialise in providing wealth preservation advice tailored to your particular circumstances, which helps minimise tax liabilities and maximise tax reliefs.

We provide the full range of estate planning:

- Wills, trust creation and management
- Estate administration
- Inheritance tax planning
- Powers of attorney and Court of Protection

## Residential conveyancing services

Our expert has over 15 years' experience of managing the property aspects of sensitive matrimonial issues and the administration of complex personal estates. We specialise in handling a broad spectrum of residential property sales and purchases, remortgages, residential tenancy agreements and can draw up, where appropriate, Deeds of Trust.